

**KE8-E extended
arithmetic element
engineering drawings**

MASTER DRAWING LIST

| MAINTENANCE MANUALS | | UNIT VARIATIONS | | | | | | | | | | | | | |
|---------------------|----------------|-----------------|--|--|--|--|--|--|--|--|--|--|--|--|--|
| NO. | TITLE | KES8-E 1 P | | | | | | | | | | | | | |
| KE8-E | EXT ARITH ELEM | X | | | | | | | | | | | | | |

| USED ON OPTIONS | | | | | | | | | | | |
|-----------------|--|--|--|--|--|--|--|--|--|--|--|
| PDP8-E | | | | | | | | | | | |
| PDP8-M | | | | | | | | | | | |
| PDP8-F | | | | | | | | | | | |

| DRN. | DATE | CHK'D. | DATE | ENG. | DATE | PROJ. ENG. | DATE | PROD. | DATE | FIRST USED ON | SCALE | SHEET 1 OF 2 | SIZE | CODE | NUMBER | REV. |
|-----------|-------|--------------------|----------------|------|------|------------|------|-------|------|---------------|-------|--------------|------|------|--------|------|
| K. GULICK | 26-71 | K. GULICK | 2677 | | | | | | | PDP8-E | NONE | | A | ML | KE8-E | C |
| | | <i>Adelmann</i> | <i>8/19/71</i> | | | | | | | | | | | | | |
| | | <i>Steele</i> | <i>8/18/71</i> | | | | | | | | | | | | | |
| | | <i>R. Peterson</i> | <i>8/18/71</i> | | | | | | | | | | | | | |

| REV. | DATE | CHG. NO. | APP'D. | REVISIONS | DWG. NO. | REV. NO. OF LET. SHEETS | TITLE | OPTION NO. |
|------|------|----------|--------|-----------|----------------|-------------------------|------------------------------|------------|
| X | | | | | D-UA-KE8-E-0 | 1 | EXTENDED ARITH ELEMENT | |
| X | | | | | A-PL-KE8-E-0 | 1 | EXTENDED ARITH ELEMENT (PL) | |
| X | | | | | E-CS-M8340-0-1 | # | DECODER & STEP COUNTER EAE | |
| X | | | | | E-CS-M8341-0-1 | # | MULTIPLEXER & TIMING GEN EAE | |
| X | | | | | B-UA-H851-0-0 | 1 | H851 EDGE CONNECTOR | MM8-E |
| X | | | | | D-FD-KE8-E-1 | 1 | EAE FLOW DIAGRAM | |
| X | | | | | D-FD-KE8-E-2 | A | ROM ENCODING FOR EAE CONT | |
| - | | | | | DEC 8E DOLA-PB | | KE8/E EAE INSTRUCTION TEST 1 | |
| - | | | | | DEC 8E DOLA-D | | KE8/E EAE INSTRUCTION TEST 1 | |
| - | | | | | DEC 8E DOMA-PB | | KE8/E EAE INSTRUCTION TEST 2 | |
| - | | | | | DEC 8E DOMA-D | | KE8/E EAE INSTRUCTION TEST 2 | |
| - | | | | | A-SP-KE8-E-3 | 1 | ENGINEERING SPECIFICATIONS | |
| X | | | | | A-SP-KE8-E-4 | 1 | ACCEPTANCE PROCEDURE | |
| - | | | | | A-SP-KE8-E-5 | 1 | CHECKOUT PROCEDURE | |
| X | | | | | A-AL-KE8-E-6 | 1 | ACCESSORY LIST | |
| - | | | | | | | | |
| - | | | | | | | | |
| - | | | | | | | | |
| - | | | | | | | | |
| - | | | | | | | | |

| TITLE | SHEET | OF | SIZE | CODE | NUMBER | REV. |
|------------------------|-------|----|------|------|--------|------|
| EXTENDED ARITH ELEMENT | 2 | 2 | A | ML | KE8-E | C |

| DIGITAL EQUIPMENT CORPORATION MAYNARD, MASSACHUSETTS | | | | LEGEND | | QUANTITY / VARIATION | | | | | | | | | | | | |
|-----------------------------------------------------------|--------------------|---------------------------------------------|--|--------------|--|---------------------------------------------------------------------------|--|-------------------|--|------|--|-----------|----|------|--------------------|----|------|--|
| MADE BY DATE | | CHECKED DATE | | SECTION | | D DOCUMENT DN DOCUMENT CHANGE NOTICE | | | | | | | | | | | | |
| ENG DATE | | PROD DATE | | ISSUED SECT. | | PA PAPER TAPE ASCII PB PAPER TAPE BINARY PM PAPER TAPE READ-IN-MODE | | | | | | | | | | | | |
| ITEM NO. | DWG NO. / PART NO. | DESCRIPTION | | | | KE8-E | | | | | | KIT CHECK | BY | DATE | INSTALLATION CHECK | BY | DATE | |
| 1 | M8340 | EAE Decoder and Stepcounter module | | | | 1 | | | | | | | | | | | | |
| 2 | M8341 | EAE Multiplexer and Timing Generator Module | | | | 1 | | | | | | | | | | | | |
| 3 | H851 | Edge Connectors | | | | 3 | | | | | | | | | | | | |
| 4 | LIBKIT-8E-KE8-E | Program Library Kit For KE8-E | | | | 1 | | | | | | | | | | | | |
| 5 | KE8-E | KE8-E Maintenance Manual | | | | 1 | | | | | | | | | | | | |
| Note: It item 5 is temporarily waived ship the following. | | | | | | | | | | | | | | | | | | |
| | A-SP-KE8-E-3 | KE8-E Engineering Specifications | | | | 1 | | | | | | | | | | | | |
| | A-SP-KE8-E-4 | KE8-E Acceptance Procedure | | | | 1 | | | | | | | | | | | | |
| TITLE Accessory List. <input type="checkbox"/> | | | | ASSY. NO. | | SIZE CODE A AL | | NUMBER KE8-E-6 | | REV. | | ECO NO | | | | | | |
| SHEET OF | | | | DIST. | | | | | | | | | | | | | | |

DIGITAL EQUIPMENT CORPORATION
MAYNARD, MASSACHUSETTS
PARTS LIST

| | | |
|---------------------------------|--------------------------|-------------------|
| MADE BY KEN GULICK | CHECKED KEN GULICK | SECTION 1 |
| DATE 7/29/71 | DATE 7/29/71 | |
| ENG <i>Richard H. Whitem</i> | PROD <i>R. Peters</i> | ISSUED SECT. 1 |
| DATE 8/18/71 | DATE 8/19/71 | |

QUANTITY / VARIATION

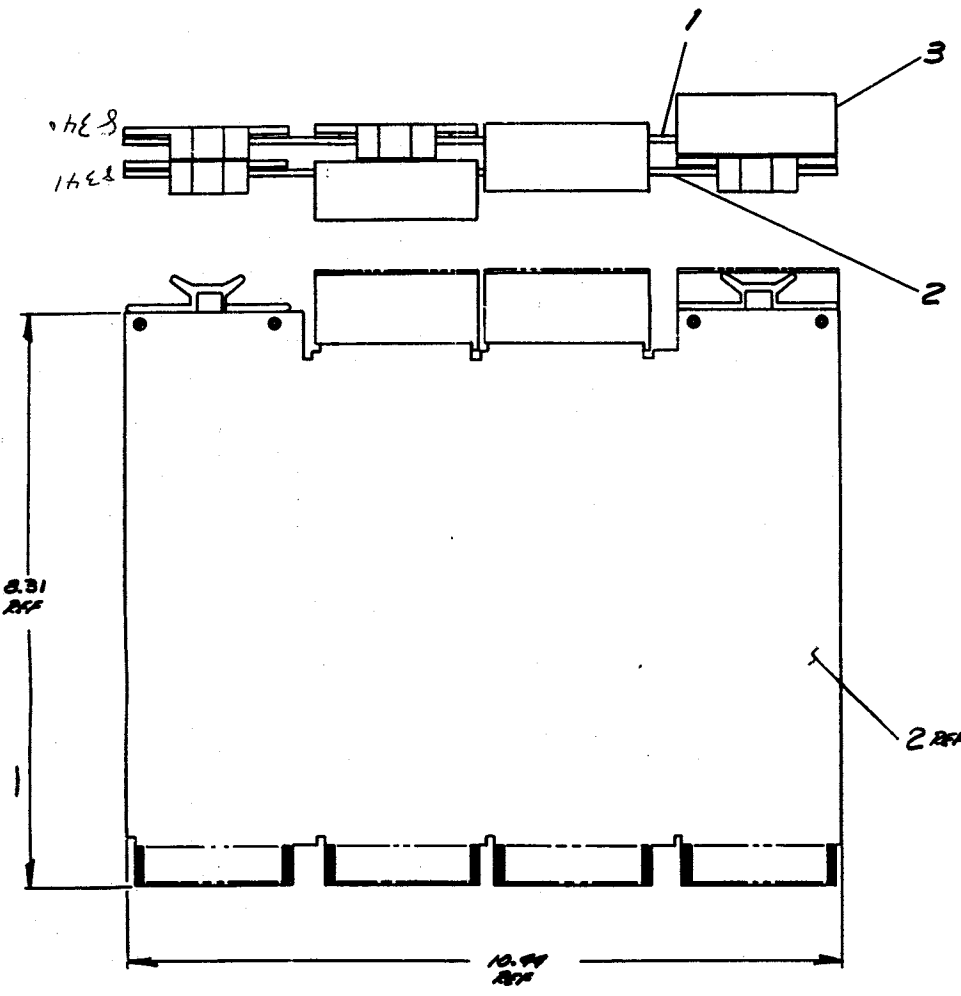
| ITEM NO. | DWG NO. / PART NO. | DESCRIPTION |
|----------|--------------------|-------------------------------|
| 1 | E-CS-M8340-0-1 | DECODER & STEP COUNTER EAE |
| 2 | E-CS-M8341-0-1 | MULTIPLEXER & TIMING GEN. EAE |
| 3 | B-UA-H851-0-0 | H851 EDGE CONNECTOR |
| | | |
| | | |
| | | |
| | | |
| | | |
| | | |
| | | |
| | | |
| | | |
| | | |
| | | |
| | | |
| | | |
| | | |
| | | |
| | | |
| | | |
| | | |
| | | |
| | | |
| | | |
| | | |
| | | |
| | | |
| | | |
| | | |
| | | |
| | | |
| | | |
| | | |
| | | |
| | | |
| | | |
| | | |
| | | |
| | | |
| | | |
| | | |
| | | |
| | | |
| | | |
| | | |
| | | |
| | | |
| | | |
| | | |
| | | |
| | | |
| | | |
| | | |
| | | |
| | | |

| | | | | | | | | | | | | | | | | | | | | | |
|-------|---|--|--|--|--|--|--|--|--|--|--|--|--|--|--|--|--|--|--|--|--|
| KE8-E | | | | | | | | | | | | | | | | | | | | | |
| | 1 | | | | | | | | | | | | | | | | | | | | |
| | 1 | | | | | | | | | | | | | | | | | | | | |
| | 3 | | | | | | | | | | | | | | | | | | | | |

| | | | | | |
|---------------------------------|--------------------------|--------------------------|-------------------|------|---------|
| TITLE EXTENDED ARITH ELEMENT | ASSY NO. D-UA-KE8-E-0 | SIZE CODE A PL | NUMBER KE8-E-0 | REV. | ECO NO. |
| SHEET 1 OF 1 | | DIST. G | | | |

This drawing and specifications, herein, are the property of Digital Equipment Corporation and shall not be reproduced or copied or used in whole or in part as the basis for the manufacture or sale of items without written permission.

D
C
B
A



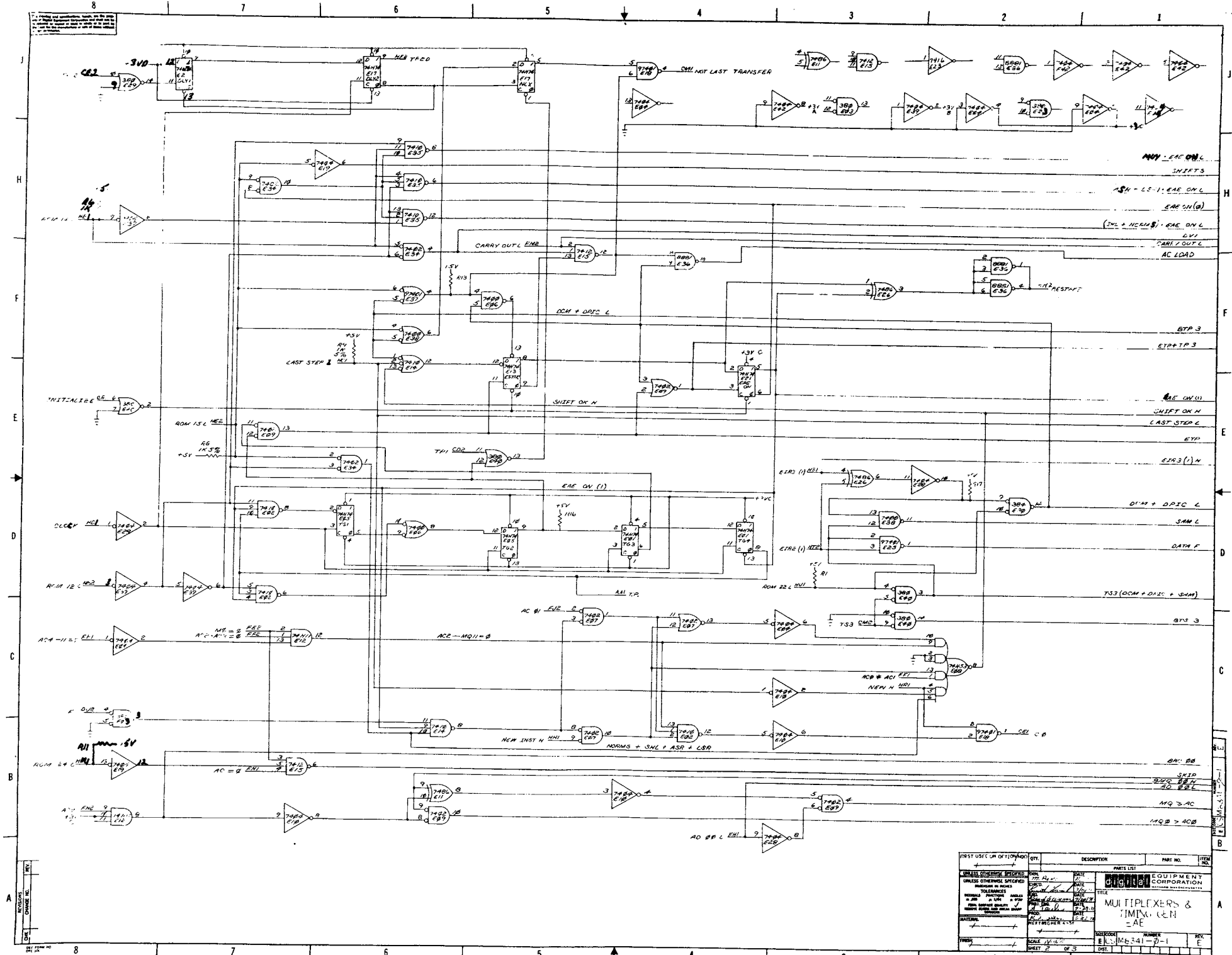
D
C
B
A

REV
DUA KE8-E-Ø

| | |
|-----|--|
| REV | |
| CHG | |
| NO | |

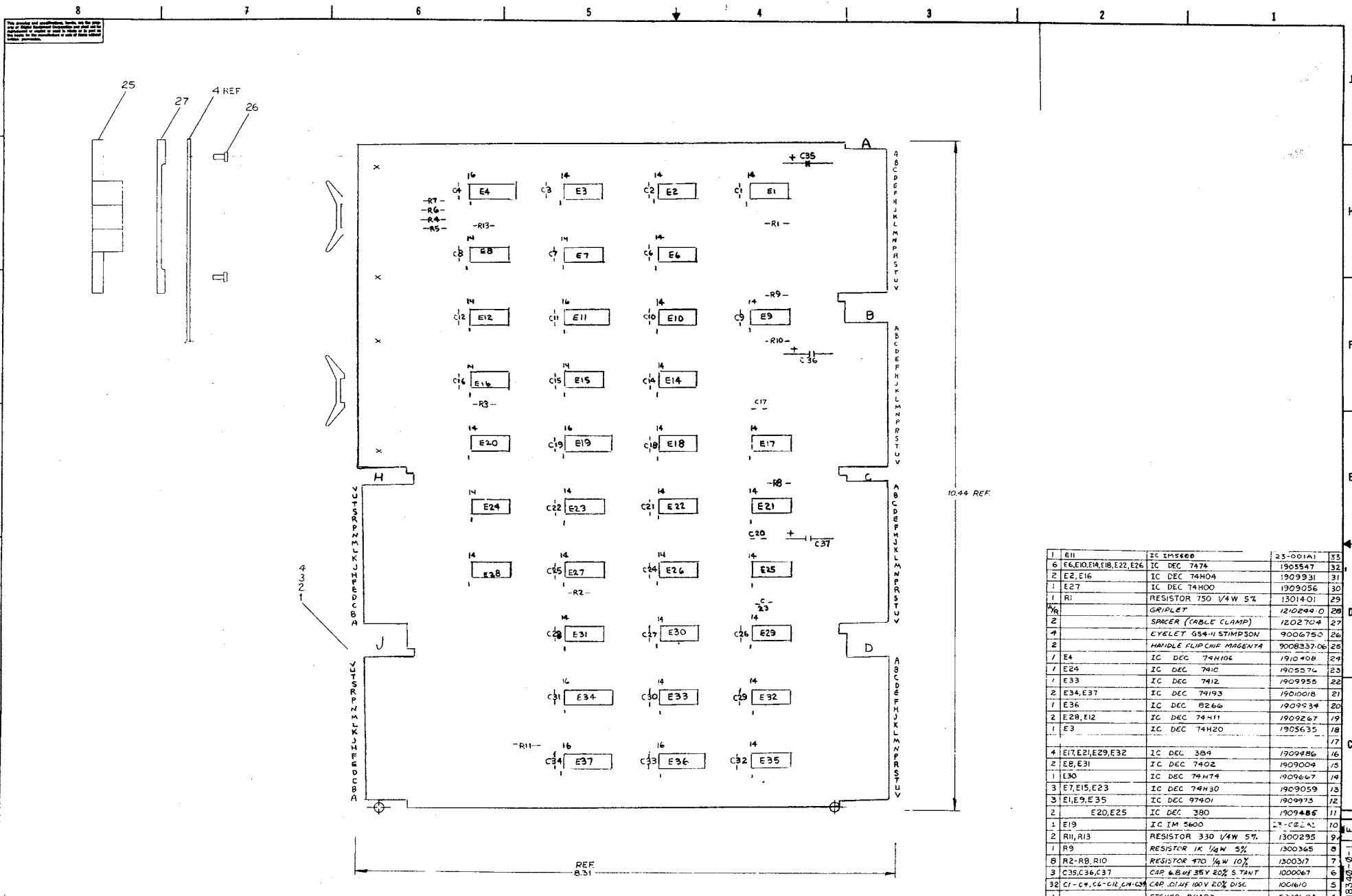
DCC FORM NO
DRD 100-A

| | | | | |
|------------------------------------------------------------------|-------------------------------|-----------------|---------------------------------------------------------------|----------|
| FIRST USED ON OPTION/MODEL PDP8-E | QTY. | DESCRIPTION | PART NO. | ITEM NO. |
| PARTS LIST | | | | |
| UNLESS OTHERWISE SPECIFIED DIMENSION IN INCHES. TOLERANCES | DRY <i>Richard</i> | DATE 7/21/71 | digital EQUIPMENT CORPORATION MAYNARD MASSACHUSETTS | |
| DECIMALS | CHK'D. <i>Richard</i> | DATE 7/21/71 | | |
| ANGLES | ENG. <i>Richard</i> | DATE 8/18/71 | TITLE EXTENDED ARITH ELEMENT | |
| .XXX - .005 .XX - .02 .X - .1 | PROJ. ENG. <i>S. Lewis</i> | DATE 8/18/71 | | |
| REMOVE BURRS AND BREAK SHARP CORNERS SURFACE QUALITY ✓ | PROP. <i>R. Williams</i> | DATE 8/18/71 | SIZE CODE DUA KE8-E-Ø | |
| MATERIAL | NEXT HIGHER ASSY. | | | |
| FINISH | SCALE <i>1:1</i> | SHEET 1 OF 1 | NUMBER DUA KE8-E-Ø | |
| | | | | |



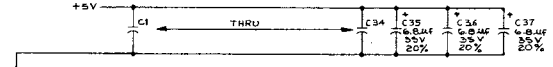
| FIRST USE OR CHANGE | | QTY. | DESCRIPTION | PART NO. | ITEM NO. |
|----------------------------|--|------|-------------|----------|----------|
| UNLESS OTHERWISE SPECIFIED | | | | | |
| UNLESS OTHERWISE SPECIFIED | | | | | |
| TOLERANCES | | | | | |
| MATERIAL | | | | | |
| FINISH | | | | | |
| SCALE | | | | | |
| SHEET | | | | | |

| EQUIPMENT CORPORATION | | PARTS LIST | |
|-------------------------------|--|-----------------------|--|
| MULTIPLXERS & TIMING GEN = AE | | EQUIPMENT CORPORATION | |
| ELECT. NO. 16-341-0-1 | | REVISION | |
| SCALE 1/4" = 1" | | SHEET 2 OF 3 | |



| QTY | REF DESIGNATION | DESCRIPTION | PART NO. | REV |
|-----|-----------------------------|------------------------------|---------------|-----|
| 1 | E11 | IC IM5600 | 23-001A1 | 33 |
| 6 | E6, E10, E14, E18, E22, E26 | IC DEC 7474 | 1905547 | 32 |
| 2 | E2, E16 | IC DEC 74H04 | 1909931 | 31 |
| 1 | E27 | IC DEC 74H00 | 1909056 | 30 |
| 1 | R1 | RESISTOR 750 1/4W 5% | 1301401 | 29 |
| 1 | R2 | GRIPLET | 1202440 | 28 |
| 2 | R3 | SPACER (ABLE CLAMP) | 1202704 | 27 |
| 4 | R4 | EYELET G54-11 STIMPSON | 9006750 | 26 |
| 2 | R5 | HANDLE FLIP CNF MAGENTA | 9008337-06 | 25 |
| 1 | E4 | IC DEC 74H106 | 1910408 | 24 |
| 1 | E24 | IC DEC 7410 | 1905574 | 23 |
| 1 | E33 | IC DEC 7412 | 1909955 | 22 |
| 2 | E34, E37 | IC DEC 74193 | 19010018 | 21 |
| 1 | E36 | IC DEC 8266 | 1909534 | 20 |
| 2 | E28, E12 | IC DEC 74411 | 1909267 | 19 |
| 1 | E3 | IC DEC 74H20 | 1905635 | 18 |
| | | | | 17 |
| 4 | E17, E21, E29, E32 | IC DEC 384 | 1909486 | 16 |
| 2 | E8, E31 | IC DEC 7402 | 1909004 | 15 |
| 1 | E30 | IC DEC 74H74 | 1909667 | 14 |
| 3 | E7, E15, E23 | IC DEC 74H30 | 1909059 | 13 |
| 3 | E1, E9, E35 | IC DEC 97401 | 1909973 | 12 |
| 2 | E20, E25 | IC DEC 380 | 1909485 | 11 |
| 1 | E19 | IC IM 5600 | 23-002A1 | 10 |
| 2 | R11, R13 | RESISTOR 330 1/4W 5% | 1300295 | 9 |
| 1 | R9 | RESISTOR 1K 1/4W 5% | 1300365 | 8 |
| 8 | R2-R8, R10 | RESISTOR 470 1/4W 10% | 1300317 | 7 |
| 3 | C35, C36, C37 | CAP 4.8UF 35V 20% STANT | 1000067 | 6 |
| 32 | C1-C4, C6-C12, C14-C34 | CAP .01UF 100V 20% DISC | 1006410 | 5 |
| 1 | | ETCHED BOARD | 5009603 | 4 |
| REF | | MODULE ECO HISTORY | B-MH-M8340-04 | 3 |
| REF | | ASSY/DRILLING HOLE LAYOUT | D-MH-M8340-05 | 2 |
| REF | | X-Y COORDINATE HOLE LOCATION | K-C-M8340-04 | 1 |

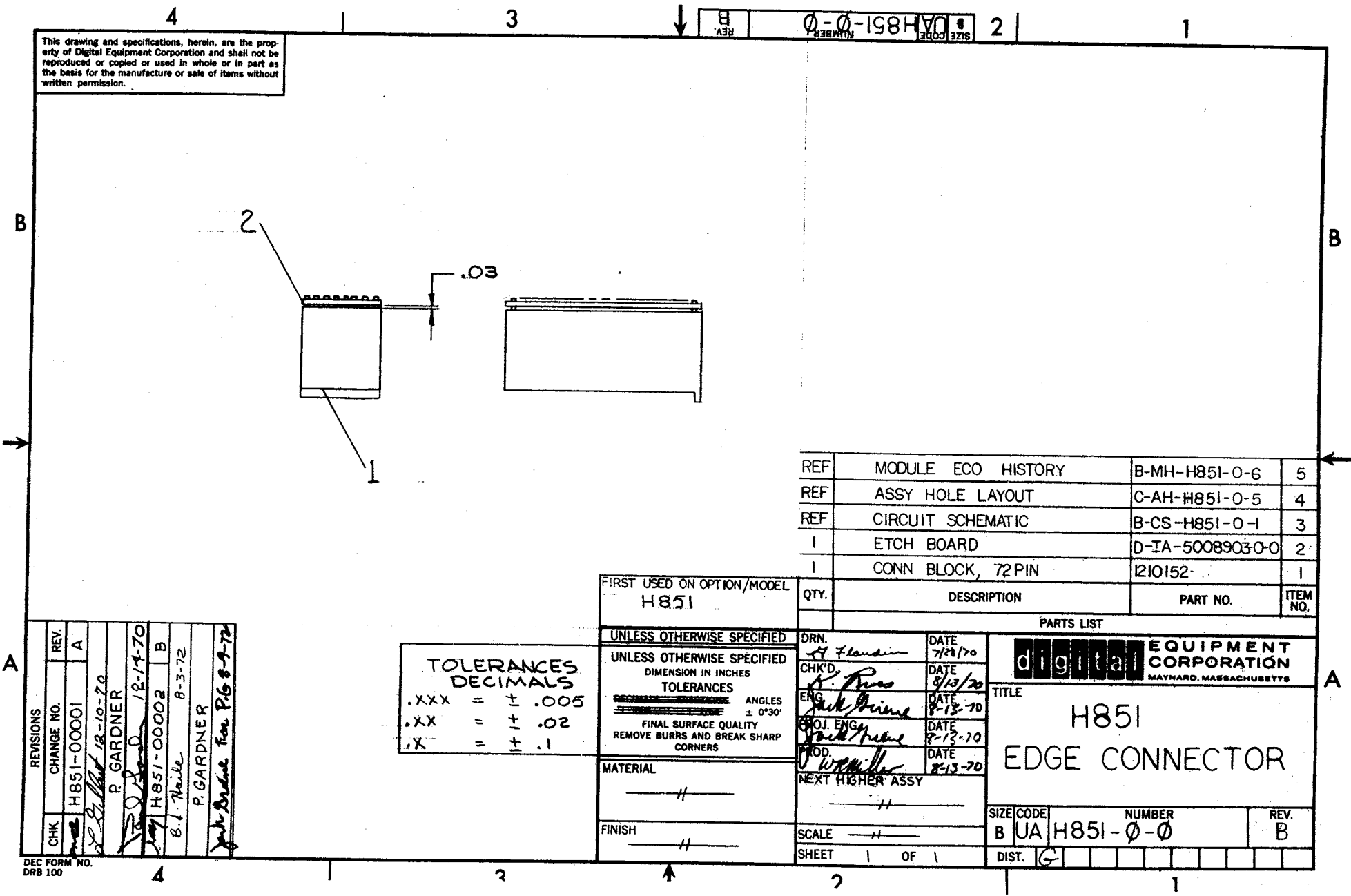
BC1, CC1, DC1,
AC2, BC2, CC2, DC2,
AF1, BF1, CF1, DF1,
AF2, BF2, CF2, DF2,
AN1, BN1, CN1, DN1,
AN2, BN2, CN2, DN2,
AT1, BT1, CT1, DT1,
AT2, BT2, CT2, DT2,



| QTY | REF DESIGNATION | DESCRIPTION | PART NO. | REV |
|-----|-----------------------------|------------------------------|---------------|-----|
| 1 | E11 | IC IM5600 | 23-001A1 | 33 |
| 6 | E6, E10, E14, E18, E22, E26 | IC DEC 7474 | 1905547 | 32 |
| 2 | E2, E16 | IC DEC 74H04 | 1909931 | 31 |
| 1 | E27 | IC DEC 74H00 | 1909056 | 30 |
| 1 | R1 | RESISTOR 750 1/4W 5% | 1301401 | 29 |
| 1 | R2 | GRIPLET | 1202440 | 28 |
| 2 | R3 | SPACER (ABLE CLAMP) | 1202704 | 27 |
| 4 | R4 | EYELET G54-11 STIMPSON | 9006750 | 26 |
| 2 | R5 | HANDLE FLIP CNF MAGENTA | 9008337-06 | 25 |
| 1 | E4 | IC DEC 74H106 | 1910408 | 24 |
| 1 | E24 | IC DEC 7410 | 1905574 | 23 |
| 1 | E33 | IC DEC 7412 | 1909955 | 22 |
| 2 | E34, E37 | IC DEC 74193 | 19010018 | 21 |
| 1 | E36 | IC DEC 8266 | 1909534 | 20 |
| 2 | E28, E12 | IC DEC 74411 | 1909267 | 19 |
| 1 | E3 | IC DEC 74H20 | 1905635 | 18 |
| | | | | 17 |
| 4 | E17, E21, E29, E32 | IC DEC 384 | 1909486 | 16 |
| 2 | E8, E31 | IC DEC 7402 | 1909004 | 15 |
| 1 | E30 | IC DEC 74H74 | 1909667 | 14 |
| 3 | E7, E15, E23 | IC DEC 74H30 | 1909059 | 13 |
| 3 | E1, E9, E35 | IC DEC 97401 | 1909973 | 12 |
| 2 | E20, E25 | IC DEC 380 | 1909485 | 11 |
| 1 | E19 | IC IM 5600 | 23-002A1 | 10 |
| 2 | R11, R13 | RESISTOR 330 1/4W 5% | 1300295 | 9 |
| 1 | R9 | RESISTOR 1K 1/4W 5% | 1300365 | 8 |
| 8 | R2-R8, R10 | RESISTOR 470 1/4W 10% | 1300317 | 7 |
| 3 | C35, C36, C37 | CAP 4.8UF 35V 20% STANT | 1000067 | 6 |
| 32 | C1-C4, C6-C12, C14-C34 | CAP .01UF 100V 20% DISC | 1006410 | 5 |
| 1 | | ETCHED BOARD | 5009603 | 4 |
| REF | | MODULE ECO HISTORY | B-MH-M8340-04 | 3 |
| REF | | ASSY/DRILLING HOLE LAYOUT | D-MH-M8340-05 | 2 |
| REF | | X-Y COORDINATE HOLE LOCATION | K-C-M8340-04 | 1 |

| | | | |
|-----------------------------------------------------------|---------|---------|---------|
| DATE | BY | CHKD | APPD |
| 11/11/77 | ... | ... | ... |
| EAE DECODER & STEP COUNTER | | | |
| DEC NO. | EIA NO. | DEC NO. | EIA NO. |
| SCALE | 2-1 | REV | ... |
| SHEET | 1 | OF | 2 |

This drawing and specifications, herein, are the property of Digital Equipment Corporation and shall not be reproduced or copied or used in whole or in part as the basis for the manufacture or sale of items without written permission.



| | | | |
|-----|--------------------|------------------|---|
| REF | MODULE ECO HISTORY | B-MH-H851-0-6 | 5 |
| REF | ASSY HOLE LAYOUT | C-AH-H851-0-5 | 4 |
| REF | CIRCUIT SCHEMATIC | B-CS-H851-0-1 | 3 |
| 1 | ETCH BOARD | D-IA-5008903-0-0 | 2 |
| 1 | CONN BLOCK, 72 PIN | I210152 | 1 |

| QTY. | DESCRIPTION | PART NO. | ITEM NO. |
|------|-------------|----------|----------|
|------|-------------|----------|----------|

digital EQUIPMENT CORPORATION
MAYNARD, MASSACHUSETTS

TITLE
H851
EDGE CONNECTOR

SIZE CODE: B UA NUMBER: H851-0-0 REV: B

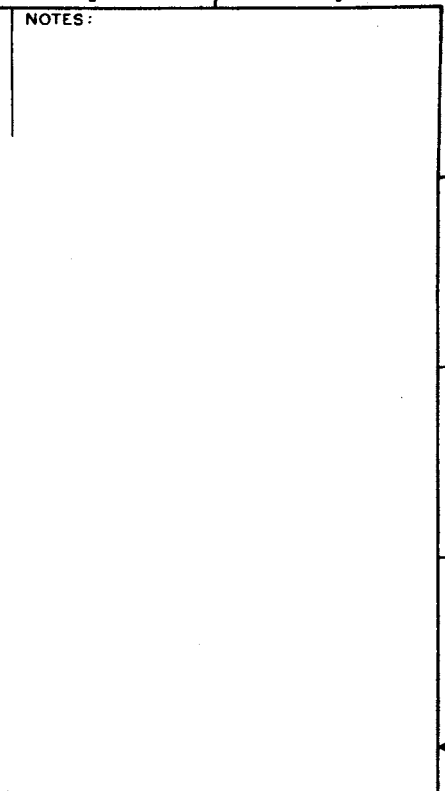
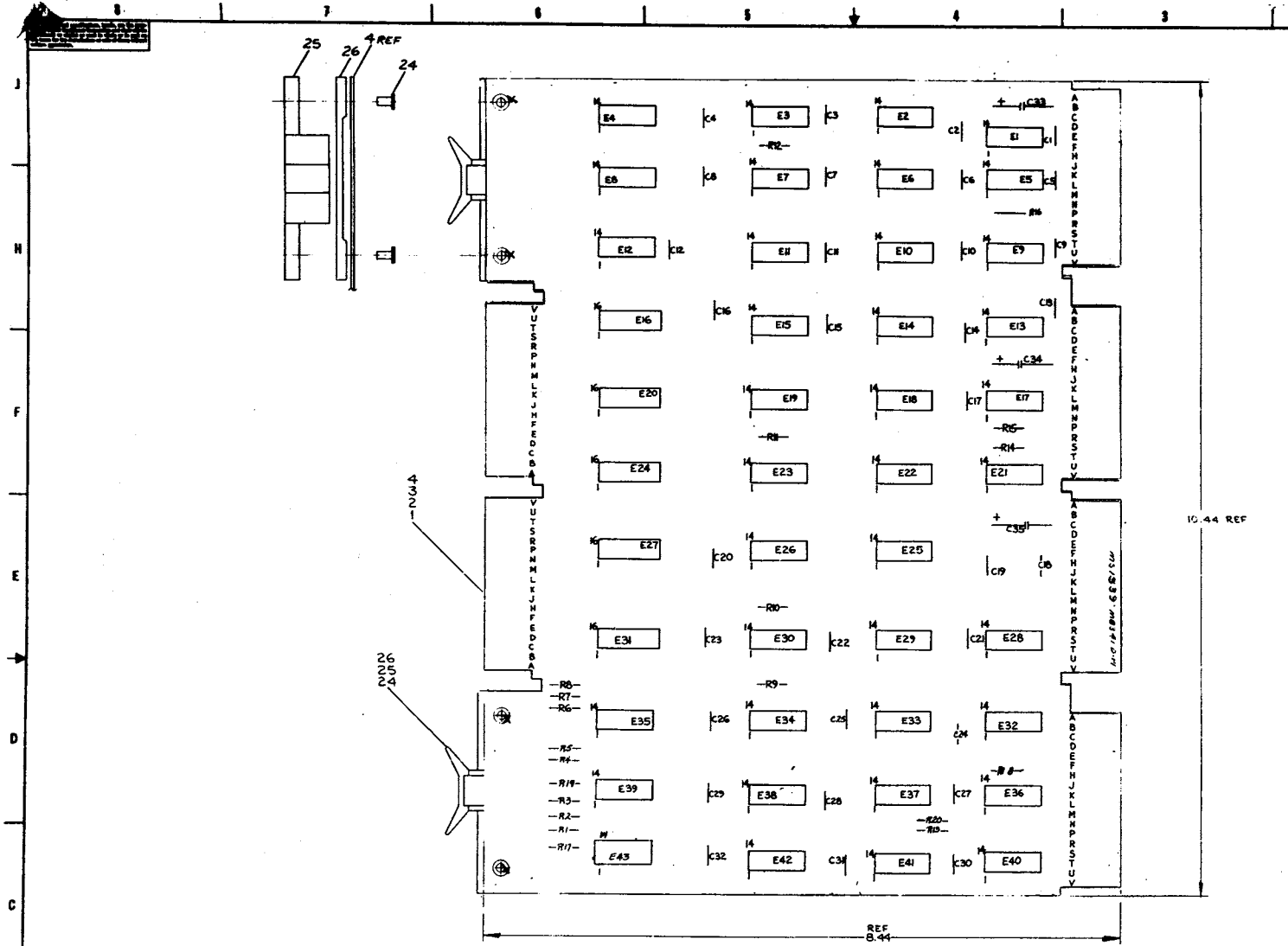
| | | | |
|------------------|-------------------|------|---------|
| DRN. | <i>A. Flouin</i> | DATE | 7/28/70 |
| CHK'D. | <i>P. Davis</i> | DATE | 8/13/70 |
| ENG. | <i>Jack Prime</i> | DATE | 8-13-70 |
| PROJ. ENG. | <i>Jack Prime</i> | DATE | 8-13-70 |
| PROD. | <i>W. Miller</i> | DATE | 8-13-70 |
| NEXT HIGHER ASSY | — | | |
| SCALE | — | | |
| SHEET | 1 OF 1 | | |

| |
|-----------------------------------------------------------------------------------|
| FIRST USED ON OPTION/MODEL H851 |
| UNLESS OTHERWISE SPECIFIED DIMENSION IN INCHES TOLERANCES ANGLES ± 0°30' |
| MATERIAL — |
| FINISH — |

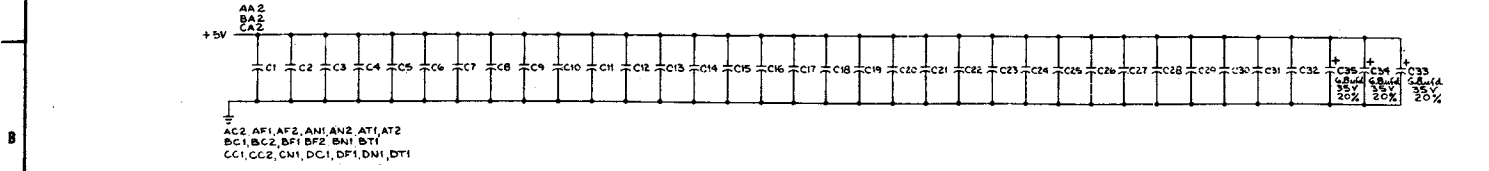
| TOLERANCES DECIMALS | |
|---------------------|----------|
| .XXX | = ± .005 |
| .XX | = ± .02 |
| .X | = ± .1 |

| REVISIONS | CHANGE NO. | REV. |
|-----------|----------------------------------|------|
| | H851-00001 | A |
| | <i>P. Gardner 12-10-70</i> | |
| | <i>P. Gardner 12-14-70</i> | B |
| | <i>B. Heile 8-3-72</i> | |
| | <i>P. Gardner</i> | |
| | <i>Jack Prime For P.6 8-9-72</i> | |

DEC FORM NO. DRB 100



| REF | REF DESIGNATION | DESCRIPTION | QTY | UNIT |
|-----|-----------------------------------------------------------------------------|------------------------------|-----|----------------|
| 1 | E43 | IC DEC 8093 | 1 | 110837 |
| 2 | E1 | GRIPLET | 12 | 120244-C |
| 2 | E5 | SPACER (CABLE CLAMP) | 12 | 120270-A |
| 2 | E21 | HANDLE, FLIP CHIP-MAGENTA | 900 | 900833T-06 |
| 4 | E15 | EYELET GS4-11 STIMPSON | 900 | 9006150 |
| 7 | E15 | IC DEC 7412 | 19 | 1909953 |
| 7 | E23 | IC DEC 7416 | 19 | 1909928 |
| 3 | E32, E36, E22 | IC DEC 8801 | 19 | 1909705 |
| 1 | E12 | IC DEC 74H11 | 19 | 1909267 |
| 3 | E7, E9, E34 | IC DEC 74C2 | 19 | 1909004 |
| 6 | E2, E10, E19, E28, E39, E42 | IC DEC 74C9 | 19 | 1909686 |
| 4 | E2, E14, E33, E35 | IC DEC 741C | 19 | 1909576 |
| 1 | E8 | IC DEC 74H53 | 19 | 1909062 |
| 2 | E11, E26 | IC DEC 74B6 | 19 | 1910011 |
| 3 | E18, E25, E37 | IC DEC 97401 | 19 | 1909475 |
| 3 | E3, E29, E40 | IC DEC 38C | 19 | 1909485 |
| 5 | E16, E20, E24, E27, E31 | IC DEC 8235 | 19 | 1909935 |
| 6 | E13, E18, E17, E21, E41 | IC DEC 74H74 | 19 | 1909667 |
| 7 | E30 | IC DEC 384 | 19 | 1909486 |
| 2 | E6, E38 | IC DEC 740C | 19 | 1909575 |
| 4 | E6, E8, E9, E15 | RES 1K 1/4W 5% | 19 | 1909365 |
| 16 | R1, R2, R3, R4, R5 R7, R8, R11, R12, R20 R13, R14, R16, R17, R18, R19 | RES 470 1/4W 10% | 19 | 1909517 |
| 3 | C38, C34, C35 | CAP 6.8uF 35V 20% TANT | 19 | 1000047 |
| 32 | C1 THRU C32 | CAP. 0.1uF 100V 20% DISC | 19 | 1001670 |
| 1 | | ETCHED CIRCUIT BOARD | 19 | 5009604 |
| REF | | MODULE ECC HISTORY | 19 | B-MH-MB341-0-1 |
| REF | | ASSY/DRILLING HOLE LAYOUT | 19 | D-MH-MB341-0-1 |
| REF | | X-Y COORDINATE HOLE LOCATION | 19 | KCO-MB341-0-1 |



| DATE | BY | REV | DESCRIPTION |
|----------|----|-----|-------------|
| DEC 8093 | | 7 | 14 |
| DEC 380 | | 1 | 8 |
| DEC 8235 | | 8 | 16 |
| DEC 384 | | 1 | 8 |

| IC TYPE | QTY | FROM | TO |
|----------|-----|------|----|
| DEC 8093 | 1 | 7 | 14 |
| DEC 380 | 1 | 8 | 8 |
| DEC 8235 | 8 | 16 | 16 |
| DEC 384 | 1 | 8 | 8 |

| ETCH BOARD REV | D | DATE | BY |
|----------------|---|------|----|
| | | | |

| DEC NO. | ETA NO. | DEC NO. | ETA NO. |
|---------|---------|---------|---------|
| | | | |

| DATE | BY | REV | DESCRIPTION |
|------|----|-----|-------------|
| | | | |

| DATE | BY | REV | DESCRIPTION |
|------|----|-----|-------------|
| | | | |

| DATE | BY | REV | DESCRIPTION |
|------|----|-----|-------------|
| | | | |

EQUIPMENT CORPORATION

MULTIPLEXERS & TIMING GEN EAE

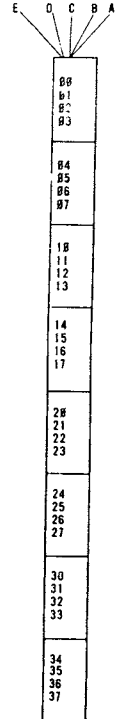
ECS MB341-0-1

This drawing and specifications, herein, are the property of Digital Equipment Corporation and shall not be reproduced or copied or used in whole or in part as the basis for the manufacture or sale of items without express permission.

NOTES:
 1. IF ANY CHANGES ARE TO BE MADE TO THIS PRINT FIRST CHECK WITH PURCHASE SPEC'S A-PS-23-001A1 AND A-SP-23-002A1.

ROM 1
 ENABLE IF MAJOR STATE = F DR E
 EIR 3 → A
 EIR 2 → B
 EIR 1 → C
 EIR 0 - NEW → D
 EXECUTE → E

ROM 2
 ENABLE IF MAJOR STATE = F
 EIR 3 → A
 EIR 2 → B
 EIR 1 → C
 EIR 0 → D
 OLD → E



| FUNCTION | Y1 | Y2 | Y3 | Y4 | Y5 | Y6 | Y7 | Y8 | OCTAL |
|---------------|----|----|----|----|----|----|----|----|-------|
| F - NOP | 1 | 1 | 1 | 1 | 1 | 1 | 1 | 1 | 377 |
| F - ACS + SCL | 1 | 1 | 1 | 1 | 1 | 1 | 1 | 1 | 377 |
| F - MUY | 1 | 1 | 1 | 1 | 0 | 0 | 0 | 0 | 371 |
| F - DVI | 1 | 1 | 1 | 1 | 1 | 1 | 1 | 1 | 377 |
| F - NMI | 0 | 1 | 1 | 0 | 0 | 0 | 1 | 1 | 143 |
| F - SHL | 0 | 1 | 1 | 1 | 1 | 1 | 1 | 1 | 377 |
| F - ASR | 0 | 1 | 1 | 1 | 1 | 1 | 1 | 1 | 171 |
| F - LSR | 1 | 1 | 1 | 1 | 0 | 0 | 0 | 0 | 371 |
| F - SCA | 1 | 1 | 1 | 1 | 1 | 1 | 1 | 1 | 377 |
| F - DAD | 1 | 1 | 1 | 1 | 1 | 0 | 0 | 1 | 371 |
| F - DST | 1 | 1 | 1 | 1 | 1 | 1 | 1 | 1 | 377 |
| NOP | 1 | 1 | 1 | 1 | 1 | 1 | 1 | 1 | 377 |
| F - DPSZ | 1 | 1 | 1 | 1 | 1 | 1 | 1 | 1 | 377 |
| F - DPIC | 1 | 0 | 0 | 1 | 1 | 0 | 0 | 1 | 231 |
| F - DCM | 1 | 0 | 0 | 1 | 1 | 0 | 0 | 1 | 231 |
| F - SAM | 1 | 1 | 0 | 1 | 1 | 0 | 0 | 1 | 331 |
| E - NOP | 1 | 1 | 1 | 1 | 1 | 1 | 1 | 1 | 377 |
| E - SCL | 1 | 1 | 1 | 1 | 1 | 1 | 0 | 0 | 376 |
| E - MUY | 1 | 0 | 1 | 1 | 0 | 1 | 1 | 1 | 267 |
| E - DVI | 1 | 0 | 1 | 0 | 0 | 0 | 0 | 1 | 241 |
| NOT USED | | | | | | | | | X |
| E - SHL | 0 | 1 | 1 | 0 | 0 | 0 | 1 | 0 | 142 |
| E - ASR | 1 | 1 | 1 | 1 | 0 | 1 | 1 | 0 | 366 |
| E - LSR | 1 | 1 | 1 | 1 | 1 | 1 | 0 | 0 | 366 |
| NOT USED | | | | | | | | | X |
| E - DAD | 1 | 1 | 0 | 1 | 1 | 0 | 0 | 1 | 331 |
| E - DST | 1 | 1 | 1 | 1 | 1 | 1 | 1 | 1 | 377 |
| NOT USED | | | | | | | | | X |
| NOT USED | | | | | | | | | X |
| NOT USED | | | | | | | | | X |
| NOT USED | | | | | | | | | X |

| FUNCTION | Y1 | Y2 | Y3 | Y4 | Y5 | Y6 | Y7 | Y8 | OCTAL |
|---------------|----|----|----|----|----|----|----|----|-------|
| NOP | 1 | 1 | 1 | 1 | 1 | 1 | 1 | 1 | 377 |
| ACS | 1 | 1 | 1 | 1 | 1 | 1 | 1 | 1 | 177 |
| NEW MUY | 1 | 1 | 0 | 1 | 1 | 0 | 0 | 1 | 331 |
| NEW DVI | 1 | 1 | 0 | 1 | 1 | 0 | 0 | 1 | 331 |
| NMI | 1 | 1 | 0 | 1 | 1 | 1 | 1 | 1 | 337 |
| SHL | 1 | 1 | 1 | 1 | 1 | 0 | 1 | 1 | 372 |
| ASR | 1 | 1 | 1 | 1 | 1 | 0 | 1 | 0 | 372 |
| LSR | 1 | 1 | 1 | 1 | 1 | 0 | 1 | 0 | 372 |
| SCA | 1 | 1 | 1 | 1 | 0 | 1 | 1 | 1 | 367 |
| DAD | 1 | 1 | 1 | 1 | 1 | 0 | 0 | 1 | 371 |
| DST | 1 | 1 | 1 | 1 | 1 | 0 | 0 | 1 | 371 |
| NOP | 1 | 1 | 1 | 1 | 1 | 1 | 1 | 1 | 377 |
| DPSZ | 1 | 1 | 1 | 0 | 1 | 1 | 1 | 1 | 357 |
| DPIC | 1 | 0 | 1 | 1 | 1 | 1 | 1 | 1 | 277 |
| DCM | 1 | 0 | 1 | 1 | 1 | 1 | 1 | 1 | 277 |
| SAM | 1 | 0 | 1 | 1 | 1 | 1 | 1 | 1 | 277 |
| NOP | 1 | 1 | 1 | 1 | 1 | 1 | 1 | 1 | 377 |
| SCL | 1 | 1 | 1 | 1 | 1 | 1 | 0 | 0 | 372 |
| OLD MUY | 1 | 1 | 0 | 1 | 1 | 0 | 1 | 1 | 332 |
| OLD DVI | 1 | 1 | 0 | 1 | 1 | 0 | 1 | 0 | 332 |
| NMI | 1 | 1 | 0 | 1 | 1 | 1 | 1 | 1 | 337 |
| SHL | 1 | 1 | 1 | 1 | 1 | 0 | 1 | 0 | 372 |
| ASR | 1 | 1 | 1 | 1 | 1 | 0 | 1 | 0 | 372 |
| LSR | 1 | 1 | 1 | 1 | 1 | 0 | 1 | 0 | 372 |
| SCA | 1 | 1 | 1 | 1 | 0 | 1 | 1 | 1 | 367 |
| SCA - SCL | 1 | 1 | 1 | 1 | 0 | 0 | 1 | 0 | 362 |
| SCA - OLD MUY | 1 | 1 | 0 | 1 | 0 | 0 | 1 | 0 | 322 |
| SCA - OLD DVI | 1 | 1 | 0 | 1 | 0 | 0 | 1 | 0 | 322 |
| SCA - NMI | 1 | 1 | 0 | 1 | 0 | 1 | 1 | 1 | 327 |
| SCA - SHL | 1 | 1 | 1 | 1 | 0 | 1 | 0 | 0 | 362 |
| SCA - ASR | 1 | 1 | 1 | 1 | 0 | 1 | 0 | 0 | 362 |
| SCA - LSR | 1 | 1 | 1 | 1 | 0 | 1 | 0 | 0 | 362 |

0 INDICATES ACB → LINK DATA AT TS3
 1 INDICATES TO SLOW → ADD (NOT MERELY SHIFT)
 1 INDICATES CARRY COUPLE AT TS2 (L → CARRY IN, CARRY OUT → L DATA)
 1 INDICATES LEFT SHIFT
 1 INDICATES A SHIFT OPERATION
 0 DISABLES CPU ADDER LINK GATING
 1 INDICATES LINK LOAD AT TP3
 1 INDICATES LOAD SC AT TP2

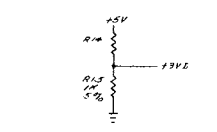
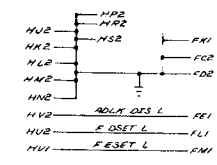
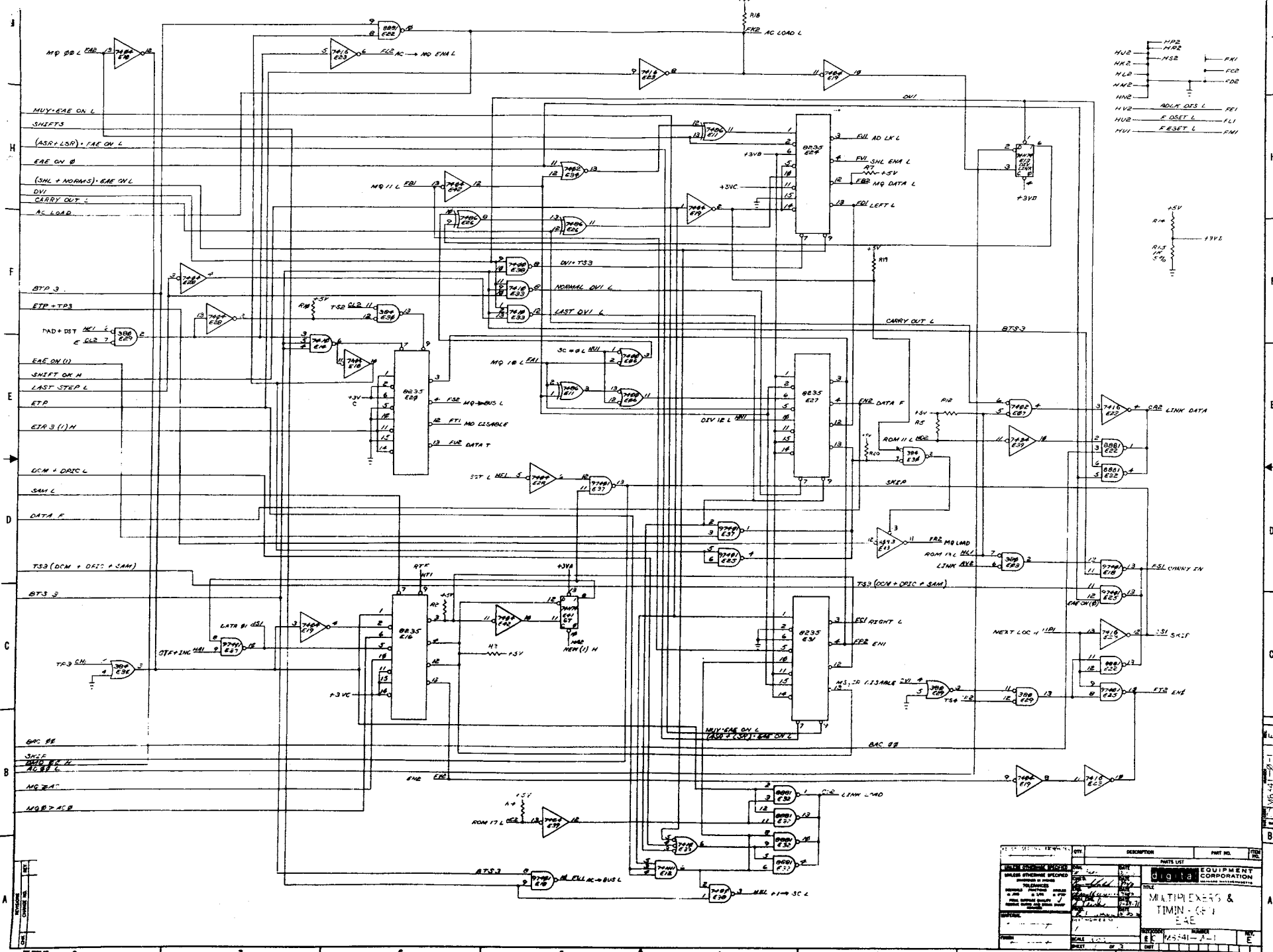
0 INDICATES ACS
 0 INDICATES DCM + SAM + DPIC
 1 INDICATES B → SC AT F - TP3
 1 INDICATES DPSZ
 1 INDICATES SCA
 0 INDICATES MA → 1 → MA, 1 → SKIP
 1 INDICATES DSET
 1 INDICATES ESET

| CHK | CHANGE NO | REV |
|-----|-------------|-----|
| | KEB-E-00003 | A |
| | ESTER | |

| | | | | |
|-----------------------------------------------------------|------------------------------|---------------------|--------------------------------------------------------|----------|
| FIRST USED ON OPTION/MODEL KEB-E | QTY. | DESCRIPTION | PART NO. | ITEM NO. |
| PARTS LIST | | | | |
| UNLESS OTHERWISE SPECIFIED DIMENSION IN INCHES TOLERANCES | DRN. <i>John Chapman</i> | DATE <i>2/24/77</i> | digital EQUIPMENT CORPORATION MAYNARD MASSACHUSETTS | |
| DECIMALS | CHK'D. <i>W. M. K...</i> | DATE <i>2/24/77</i> | TITLE ROM ENCODING | |
| ANGLES | ENG. <i>W. M. K...</i> | DATE <i>2/24/77</i> | | |
| xxx - 006 | PROJ. ENG. <i>W. M. K...</i> | DATE <i>2/24/77</i> | | |
| xx - 02 | PROJ. <i>W. M. K...</i> | DATE <i>2/24/77</i> | | |
| x - 1 | PROJ. <i>W. M. K...</i> | DATE <i>2/24/77</i> | | |
| REMOVE BURRS AND BREAK SHARP CORNERS SURFACE QUALITY | | | | |
| MATERIAL | NEXT HIGHER ASSY. | SIZE CODE | NUMBER | REV |
| | A-ML-KEB-E | D | FD KE 3-E-02 | A |
| FINISH | SCALE NONE | SHEET | 1 OF 1 | |

REV. CONTROL SHEET
 DFD KE 3-E-02

8 7 6 5 4 3 2 1



| REV | DESCRIPTION | QTY | DESCRIPTION | PART NO. | ITEM NO. |
|-----|-------------|-----|-------------------|----------|----------|
| 1 | 0825 | 2 | 8-BIT COUNTER | 0825 | |
| 1 | 0835 | 2 | 2-BIT COUNTER | 0835 | |
| 1 | 7400 | 12 | 2-INPUT NAND GATE | 7400 | |
| 1 | 7401 | 2 | INVERTER | 7401 | |
| 1 | 7402 | 2 | 3-INPUT NAND GATE | 7402 | |
| 1 | 7404 | 2 | INVERTER | 7404 | |
| 1 | 7408 | 2 | 3-INPUT OR GATE | 7408 | |
| 1 | 7410 | 2 | 3-INPUT NAND GATE | 7410 | |
| 1 | 7411 | 2 | 3-INPUT AND GATE | 7411 | |
| 1 | 7412 | 2 | 3-INPUT OR GATE | 7412 | |
| 1 | 7413 | 2 | 3-INPUT AND GATE | 7413 | |
| 1 | 7414 | 2 | INVERTER | 7414 | |
| 1 | 7415 | 2 | 3-INPUT OR GATE | 7415 | |
| 1 | 7416 | 2 | 3-INPUT AND GATE | 7416 | |
| 1 | 7417 | 2 | 3-INPUT OR GATE | 7417 | |
| 1 | 7418 | 2 | 3-INPUT AND GATE | 7418 | |
| 1 | 7419 | 2 | 3-INPUT OR GATE | 7419 | |
| 1 | 7420 | 2 | 3-INPUT AND GATE | 7420 | |
| 1 | 7421 | 2 | 3-INPUT OR GATE | 7421 | |
| 1 | 7422 | 2 | 3-INPUT AND GATE | 7422 | |
| 1 | 7423 | 2 | 3-INPUT OR GATE | 7423 | |
| 1 | 7424 | 2 | 3-INPUT AND GATE | 7424 | |
| 1 | 7425 | 2 | 3-INPUT OR GATE | 7425 | |
| 1 | 7426 | 2 | 3-INPUT AND GATE | 7426 | |
| 1 | 7427 | 2 | 3-INPUT OR GATE | 7427 | |
| 1 | 7428 | 2 | 3-INPUT AND GATE | 7428 | |
| 1 | 7429 | 2 | 3-INPUT OR GATE | 7429 | |
| 1 | 7430 | 2 | 3-INPUT AND GATE | 7430 | |
| 1 | 7431 | 2 | 3-INPUT OR GATE | 7431 | |
| 1 | 7432 | 2 | 3-INPUT AND GATE | 7432 | |
| 1 | 7433 | 2 | 3-INPUT OR GATE | 7433 | |
| 1 | 7434 | 2 | 3-INPUT AND GATE | 7434 | |
| 1 | 7435 | 2 | 3-INPUT OR GATE | 7435 | |
| 1 | 7436 | 2 | 3-INPUT AND GATE | 7436 | |
| 1 | 7437 | 2 | 3-INPUT OR GATE | 7437 | |
| 1 | 7438 | 2 | 3-INPUT AND GATE | 7438 | |
| 1 | 7439 | 2 | 3-INPUT OR GATE | 7439 | |
| 1 | 7440 | 2 | 3-INPUT AND GATE | 7440 | |
| 1 | 7441 | 2 | 3-INPUT OR GATE | 7441 | |
| 1 | 7442 | 2 | 3-INPUT AND GATE | 7442 | |
| 1 | 7443 | 2 | 3-INPUT OR GATE | 7443 | |
| 1 | 7444 | 2 | 3-INPUT AND GATE | 7444 | |
| 1 | 7445 | 2 | 3-INPUT OR GATE | 7445 | |
| 1 | 7446 | 2 | 3-INPUT AND GATE | 7446 | |
| 1 | 7447 | 2 | 3-INPUT OR GATE | 7447 | |
| 1 | 7448 | 2 | 3-INPUT AND GATE | 7448 | |
| 1 | 7449 | 2 | 3-INPUT OR GATE | 7449 | |
| 1 | 7450 | 2 | 3-INPUT AND GATE | 7450 | |
| 1 | 7451 | 2 | 3-INPUT OR GATE | 7451 | |
| 1 | 7452 | 2 | 3-INPUT AND GATE | 7452 | |
| 1 | 7453 | 2 | 3-INPUT OR GATE | 7453 | |
| 1 | 7454 | 2 | 3-INPUT AND GATE | 7454 | |
| 1 | 7455 | 2 | 3-INPUT OR GATE | 7455 | |
| 1 | 7456 | 2 | 3-INPUT AND GATE | 7456 | |
| 1 | 7457 | 2 | 3-INPUT OR GATE | 7457 | |
| 1 | 7458 | 2 | 3-INPUT AND GATE | 7458 | |
| 1 | 7459 | 2 | 3-INPUT OR GATE | 7459 | |
| 1 | 7460 | 2 | 3-INPUT AND GATE | 7460 | |
| 1 | 7461 | 2 | 3-INPUT OR GATE | 7461 | |
| 1 | 7462 | 2 | 3-INPUT AND GATE | 7462 | |
| 1 | 7463 | 2 | 3-INPUT OR GATE | 7463 | |
| 1 | 7464 | 2 | 3-INPUT AND GATE | 7464 | |
| 1 | 7465 | 2 | 3-INPUT OR GATE | 7465 | |
| 1 | 7466 | 2 | 3-INPUT AND GATE | 7466 | |
| 1 | 7467 | 2 | 3-INPUT OR GATE | 7467 | |
| 1 | 7468 | 2 | 3-INPUT AND GATE | 7468 | |
| 1 | 7469 | 2 | 3-INPUT OR GATE | 7469 | |
| 1 | 7470 | 2 | 3-INPUT AND GATE | 7470 | |
| 1 | 7471 | 2 | 3-INPUT OR GATE | 7471 | |
| 1 | 7472 | 2 | 3-INPUT AND GATE | 7472 | |
| 1 | 7473 | 2 | 3-INPUT OR GATE | 7473 | |
| 1 | 7474 | 2 | 3-INPUT AND GATE | 7474 | |
| 1 | 7475 | 2 | 3-INPUT OR GATE | 7475 | |
| 1 | 7476 | 2 | 3-INPUT AND GATE | 7476 | |
| 1 | 7477 | 2 | 3-INPUT OR GATE | 7477 | |
| 1 | 7478 | 2 | 3-INPUT AND GATE | 7478 | |
| 1 | 7479 | 2 | 3-INPUT OR GATE | 7479 | |
| 1 | 7480 | 2 | 3-INPUT AND GATE | 7480 | |
| 1 | 7481 | 2 | 3-INPUT OR GATE | 7481 | |
| 1 | 7482 | 2 | 3-INPUT AND GATE | 7482 | |
| 1 | 7483 | 2 | 3-INPUT OR GATE | 7483 | |
| 1 | 7484 | 2 | 3-INPUT AND GATE | 7484 | |
| 1 | 7485 | 2 | 3-INPUT OR GATE | 7485 | |
| 1 | 7486 | 2 | 3-INPUT AND GATE | 7486 | |
| 1 | 7487 | 2 | 3-INPUT OR GATE | 7487 | |
| 1 | 7488 | 2 | 3-INPUT AND GATE | 7488 | |
| 1 | 7489 | 2 | 3-INPUT OR GATE | 7489 | |
| 1 | 7490 | 2 | 3-INPUT AND GATE | 7490 | |
| 1 | 7491 | 2 | 3-INPUT OR GATE | 7491 | |
| 1 | 7492 | 2 | 3-INPUT AND GATE | 7492 | |
| 1 | 7493 | 2 | 3-INPUT OR GATE | 7493 | |
| 1 | 7494 | 2 | 3-INPUT AND GATE | 7494 | |
| 1 | 7495 | 2 | 3-INPUT OR GATE | 7495 | |
| 1 | 7496 | 2 | 3-INPUT AND GATE | 7496 | |
| 1 | 7497 | 2 | 3-INPUT OR GATE | 7497 | |
| 1 | 7498 | 2 | 3-INPUT AND GATE | 7498 | |
| 1 | 7499 | 2 | 3-INPUT OR GATE | 7499 | |
| 1 | 7500 | 2 | 3-INPUT AND GATE | 7500 | |

DIGITAL EQUIPMENT CORPORATION
MAYNARD, MASSACHUSETTS

LEGEND
 D DOCUMENT
 DN DOCUMENT CHANGE NOTICE
 PA PAPER TAPE ASCII
 PB PAPER TAPE BINARY
 PM PAPER TAPE READ-IN-MODE

QUANTITY/VARIATION

ACCESSORY LIST

| | | | |
|-----------------|-------------------------|-----------------|--------------|
| MADE BY DATE | J. McCluskey 4/19/72 | CHECKED DATE | SECTION |
| ENG DATE | L. Klotz 4/19/72 | PROD DATE | ISSUED SECT. |

| ITEM NO. | DWG NO. / PART NO. | DESCRIPTION | KE8-E | | | | | KIT CHECK | BY | DATE | INSTALLATION CHECK | BY | DATE |
|----------|--------------------|-----------------------------------------------------------|-------|--|--|--|--|-----------|----|------|--------------------|----|------|
| 1 | M8340 | EAE Decoder and Stepcounter module | 1 | | | | | | | | | | |
| 2 | M8341 | EAE Multiplexer and Timing Generator Module | 1 | | | | | | | | | | |
| 3 | H851 | Edge Connectors | 3 | | | | | | | | | | |
| 4 | LIBKIT-8E-KE8-E | Program Library Kit For KE8-E | 1 | | | | | | | | | | |
| 5 | KE8-E | KE8-E Maintenance Manual | 1 | | | | | | | | | | |
| | | Note: If item 5 is temporarily waived ship the following. | | | | | | | | | | | |
| | A-SP-KE8-E-3 | KE8-E Engineering Specifications | 1 | | | | | | | | | | |
| | A-SP-KE8-E-4 | KE8-E Acceptance Procedure | 1 | | | | | | | | | | |
| | | | | | | | | | | | | | |
| | | | | | | | | | | | | | |
| | | | | | | | | | | | | | |
| | | | | | | | | | | | | | |
| | | | | | | | | | | | | | |
| | | | | | | | | | | | | | |
| | | | | | | | | | | | | | |
| | | | | | | | | | | | | | |
| | | | | | | | | | | | | | |
| | | | | | | | | | | | | | |
| | | | | | | | | | | | | | |
| | | | | | | | | | | | | | |
| | | | | | | | | | | | | | |

| | | | | | |
|------------------------------------------------------------|----------|---------------------|-------------------|------|--------|
| TITLE: Accessory List. <input checked="" type="checkbox"/> | ASSY. NO | SIZE CODE A AL | NUMBER KE8-E-6 | REV. | ECO NO |
| SHEET OF | DIST. | | | | |

REVISED 8-8-68

This drawing and specifications herein are the property of Digital Equipment Corporation and shall not be reproduced or copied or used in whole or in part as the basis for the manufacture or sale of items without written permission.

| | | NEW ONLY | | | NEW OR OLD | | | | | | | | NEW ONLY | | | | | OLD ONLY | | | | |
|-----------|------------|------------------------------------------------------------|----------------------------------------------------------------------------------------------------------------------------------------------------------------------------|-----------------------------------------------------------------------------------------------------------------------------------------------------------------------------------------------------------------------------------------------------------------------------------------------------------------------------------------------------------------------------------------------------------------------------------------------------|------------|-------------------------------------------------------------------------------------------------------------------------------------------------------------------------------------|-------------------------|----------------------------------------------------|-------------------------------|-------------------------|----------------------------|--------|--------------|--------------------------------------------------------------------------|---------------------------------------------------------------------------------------------------------------------------------------------------------------------------------------------------------------------------------------|----------------------------|---------------------------------------------------------------------------------------------------------------------------------------------------------------------------------------------------------------------------------------|---------------------------------------------------------------------------------------------------------------------------------------|-------------------|------------------------------------------------------------------------|--|--|
| MAJ STATE | TIME STATE | CP EVENTS | ACS EIR = 1 | MUY 2 | DYI 3 | NMI 4 | SHL | ASR 6 | LSR 7 | SCA NEW: 10 OLD: 1X | DAD 11 | DST 12 | SWAB OR SWBA | DPIC 14 | DPSZ 15 | DCW 16 | SAM 17 | SCL 1 | COMMON EAE EVENTS | | | |
| D | TS1 | PC UPDATE | | | | | | | | | | | | | | | | | | 0 → EIR | | |
| | TS2 | MOB-2 → IR | | | | | | | | | | | | | | | | | | IF EAE INST. MOB. S. S. 1 → EIR | | |
| | TS3 | AC LOAD AT TP3 DATA T L MO LOAD AT TP3 IF MD7 = 1 | SET SC LD AT TP2 L DATA BUS → SC CBL | 0 SC LINK LOAD (B-L) ADLK DIS I | 0 → SC | 0 → SC START EAE TO AT TP3 ACB → L DATA IF EAE ON, SHIFT LEFT UNTIL ACB ≠ AC1, OR AC1-MQ11 = 0, +1 → SC RESTART CP IF "NEW" AND AC. MO = 40000000, CBL ADLK DIS L | | ACB → LINK DATA ADLK DIS L LINK LOAD (ACB-LINK) | ADLK DIS L LINK LOAD (B-LINK) | SCV DATA → DATA | ADLK DIS L LINK LOAD (B-L) | | | IF MODE = A AND SWAB, SET MODE B IF MODE = B AND SWBA, SET MODE A | AC → MQ, MQ → AC BECAUSE OF INSTR. ADLK DIS L CARRY IN CARRY OUT → LINK DATA [MO LOAD, AC LOAD] LINK LOAD START EAE TC, ONE CYCLE ONLY L → CARRY IN CARRY OUT → LINK DATA AC LOAD, MQ LOAD LINK LOAD | IF AC, MQ = B. 1 → SKIP | AC → MQ, MQ → AC BECAUSE OF INSTR. ADLK DIS L CARRY IN CARRY OUT → LINK DATA [MO LOAD, AC LOAD] LINK LOAD START EAE TC, ONE CYCLE ONLY L → CARRY IN CARRY OUT → LINK DATA AC LOAD, MQ LOAD LINK LOAD | ADLK DIS L DATA F CARRY IN ENB L MQ → EN 2 L ADDERS CARRY OUT → LINK DATA [AC LOAD] LINK LOAD GT GATING ENA GT LOAD | | | | |
| | TS4 | | 1 → F | 1 → SKIP | 1 → SKIP | 1 → F | 1 → SKIP | 1 → SKIP | 1 → SKIP | 1 → F | 1 → SKIP | 1 → F | 1 → F | 1 → F | 1 → F | 1 → F | 1 → F | 1 → F | 1 → F | 1 → SKIP | | |
| | TS4 | | ENB CARRY IN (MA+1) NEW: 1 → D OLD: 1 → E | ENB CARRY IN (MA) NEW: 1 → D OLD: 1 → E | | | ENB CARRY IN (MA) 1 → E | ENB CARRY IN (MA) 1 → E | ENB CARRY IN (MA+1) 1 → D | ENB CARRY IN (MA) 1 → D | | | 1 → F | 1 → F | 1 → F | 1 → F | 1 → F | ENB CARRY IN (MA+1-MA) 1 → E | | | | |
| D | ALL | OBTAIN OPERAND ADDRESS | | | | | | | | | | | | | | | | | | | | |
| C | TS2 | | | | | | | | | 1 → EX1 | 1 → EX1 | | | | | | | | | | | |
| E1 | TS2 | | | | | | | | | | | | | | | | | | | | | |
| | TS3 | DATA T L | | | | | | | | | | | | | | | | | | | | |
| | TS4 | | | | | | | | | | | | | | | | | | | | | |
| | TS2 | | | | | | | | | | | | | | | | | | | | | |
| | TS3 | DATA T L | AC → BUS L START EAE TC AT TP3 IF EAE ON: RIGHT L IF MQ11 = 1, EN 1 AC LOAD, MQ LOAD REPEAT 12 TIMES RESTART CP WHEN SC = 13 ADLK DIS MUST BE HIGH | ADLK DIS L: AC → BUS L 1 → LINK DATA: LINK LOAD START EAE TC AT TP3 IF CARRY OUT L IF SC = B, DATA F L IF MD10/MQ11 AND SC ≠ 13, DATA F L IF EAE OFF, MOB → ADLK L IF EAE ON, MOB XOR MQ11 → ADLK L ADJ → DIV LNK IF MD10 = 1 OR SC ≠ 13, DIV LNK XOR CARRY OUT → MQ DATA L SHL → LD ENA L, ENI L LEFT L SC = 13: LEFT L IF MQ11 = 1, DATA F IF DIV LNK (B), ENI L MQ LOAD, AC LOAD L LOAD (B-LINK) | | | | WD → SC | WD → SC | | | | | | | | | | | | | |
| | TS4 | | 1 → F | 1 → F | | | 1 → F | | | | | | | | | | | | | | | |
| | TS4 | | | | | | | | | | | | | | | | | | | FOR EACH EAE TIME PULSE, +1 → SC UNLESS RESTART WITH NO SHIFT ENABLES. | | |

| | |
|------|--|
| REV. | |
| CHG. | |
| NO. | |

| | | | | |
|------------------------------------------------------------|-------------------|--------------------------|-----------------------|----------------------------------------------|
| FIRST USED ON OPTION/MODEL | QTY. | DESCRIPTION | PART NO. | ITEM NO. |
| KE8-E | | | | |
| PARTS LIST | | | | |
| UNLESS OTHERWISE SPECIFIED DIMENSION IN INCHES. TOLERANCES | | DRN. <i>Tom Capron</i> | DATE <i>22 Jan 71</i> | DIGITAL EQUIPMENT CORPORATION CORPORATION |
| | | CHK'D. <i>W. M. ...</i> | DATE <i>8/17/71</i> | |
| DECIMALS | ANGLES | ENG. <i>W. M. ...</i> | DATE <i>8/17/71</i> | TITLE |
| .XXX - .005 | 5° 30' | PROL. ENG. <i>S. ...</i> | DATE <i>8/17/71</i> | EAE FLOW DIAGRAM |
| REMOVE BURRS AND BREAK SHARP CORNERS SURFACE QUALITY ✓ | | <i>R. Tolson</i> | DATE <i>8/17/71</i> | |
| MATERIAL | NEXT HIGHER ASSY. | | SIZE CODE | NUMBER |
| | A-ML-KE8-E | | | |
| FINISH | SCALE NONE | | DIST. KE8-E-C1 | REV. |
| | SHEET 1 OF 1 | | | |

DWG. FORM NO. DND 108-A

DIGITAL EQUIPMENT CORPORATION
MAYNARD, MASSACHUSETTS

ENGINEERING SPECIFICATION

CONTINUATION SHEET

ENGINEERING SPECIFICATION

DATE 2/15/72

TITLE KE8E ACCEPTANCE PROCEDURE

REVISIONS

| REV | DESCRIPTION | CHG NO | ORIG | DATE | APPD BY | DATE |
|-----|-------------|--------|------|------|---------|------|
| | | | | | | |

TITLE KE8E ACCEPTANCE PROCEDURE

- 1.Ø Equipment Required
 - A. PDP-8E or PDP-8M
 - B. M8340
 - C. M8341
 - D. 3-H851's
 - E. Teletype
 - F. Maindec-8E-DØLB-D-PB KE8E Instruction Test 1
 - G. Maindec-8E-DØMB-D-PB KE8E Instruction Test 2
 - H. Maindec-8E-DØRA-D-PB KE8E Extended Memory Exerciser

- 2.Ø Check that the M8340 and M8341 have:
 - A. Proper circuit revision.
 - B. Day code.

- 3.Ø Load and run the following diagnostics, consulting the Diagnostic Document for proper operating procedure.
 - A. Maindec-8E-DØLB for two complete program passes which will be indicated by "KE81" being typed out twice.
 - B. Maindec-8E-DØMB for two complete program passes which will be indicated by "KE8E" being typed out twice.
 - C. Maindec-8E-DØRA for five complete program passes which will be indicated by "KE8EME" being typed out five times. At the beginning of the program, be sure to type the correct value defining the maximum amount of memory.

- 4.Ø Shipping Hardware
 - A. M8340
 - B. M8341
 - C. 3-H8351's

- 5.Ø Shipping Software
 - A. Libkit-8E-KE8E
 - B. KE8E Print Set
 - C. KE8E Maintenance Manual

This drawing and specifications, herein, are the property of Digital Equipment Corporation and shall not be reproduced or copied or used in whole or in part as the basis for the manufacture or sale of items without written permission.

| | | | | | |
|------------------------|--------------------------|------------------|------------|---------------------|-----|
| ENG <i>Louis H. G.</i> | APPD <i>F. M. Conway</i> | SIZE A | CODE SP | NUMBER KE8-E-0-4 | REV |
|------------------------|--------------------------|------------------|------------|---------------------|-----|

| | | | |
|------------------|------------|---------------------|-----|
| SIZE A | CODE SP | NUMBER KE8-E-0-4 | REV |
|------------------|------------|---------------------|-----|

DIGITAL EQUIPMENT CORPORATION WORLD-WIDE SALES AND SERVICE

146 Main Street, Maynard, Massachusetts, U.S.A. 01754
 Telephone: From Metropolitan Boston: 646-8600 • Elsewhere: (617)-897-5111
 TWX: 710-347-0212 Cable: DIGITAL MAYN Telex: 94-8457

UNITED STATES

NORTHEAST

REGIONAL OFFICE
 275 Wyman Street, Waltham, Massachusetts 02154
 Telephone: (617)-890-0320/0330 TWX: 710-324-6919
WALTHAM
 15 Lunda Street, Waltham, Massachusetts 02154
 Telephone: (617)-891-1030 TWX: 710-324-6919
CAMBRIDGE/BOSTON
 893 Main Street, Cambridge, Massachusetts 02139
 Telephone: (617)-491-6130 TWX: 710-320-1167
ROCHESTER
 130 Allens Creek Road, Rochester, New York 14618
 Telephone: (716)-461-1700 TWX: 710-253-3078
CONNECTICUT
 240 Pomeroy Ave., Meriden, Conn 06450
 Telephone: (203)-237-8441/7466 TWX: 710-461-0054

MID-ATLANTIC — SOUTHEAST
REGIONAL OFFICE:
 1850 Frontage Road, Northbrook, Illinois 60062
 Telephone: (312)-498-2500 TWX: 810-686-0655
PITTSBURGH
 400 Penn Center Boulevard
 Pittsburgh, Pennsylvania 15235
 Telephone: (412)-243-9404 TWX: 710-797-3657
CHICAGO
 1850 Frontage Road, Northbrook, Illinois 60062
 Telephone: (312)-498-2500 TWX: 810-686-0655
ANN ARBOR
 230 Huron View Boulevard, Ann Arbor, Michigan 48103
 Telephone: (313)-761-1150 TWX: 810-223-6053
INDIANAPOLIS
 21 Beachway Drive — Suite G
 Indianapolis, Indiana 46224
 Telephone: (317)-243-8341 TWX: 810-341-3436
MINNEAPOLIS
 Suite 111, 8030 Cedar Avenue South,
 Minneapolis, Minnesota 55420
 Telephone: (612)-854-6562-3-4-5 TWX: 910-576-2818
CLEVELAND
 Park Hill Bldg., 35104 Euclid Ave
 Willoughby, Ohio 44094
 Telephone: (216)-946-8484 TWX: 810-427-2608
ST. LOUIS
 Suite 110, 115 Progress Pky., Maryland Heights,
 Missouri 63043
 Telephone: (314)-878-4310 TWX: 910-764-0831
DAYTON
 3101 Kettering Blvd., Dayton, Ohio 45439
 Telephone: (513)-299-7377 TWX: 810-459-1676
MILWAUKEE
 6531 W. Capitol Drive, Milwaukee, Wisconsin 53222
 Telephone: (414)-463-9110 TWX: 910-262-1199
DALLAS
 8955 North Stemmons Freeway
 Dallas, Texas 75247
 Telephone: (214)-638-4880 TWX: 910-861-4000
HOUSTON
 3417 Milam Street, Suite A, Houston, Texas 77002
 Telephone: (713)-524-2961 TWX: 910-881-1651

CENTRAL (cont.)
KNOXVILLE
 6311 Kingston Pike, Suite 21E
 Knoxville, Tennessee 37919
 Telephone: (615)-588-6571 TWX: 810-583-0123

WEST
REGIONAL OFFICE
 310 Soquel Way, Sunnyvale, California 94086
 Telephone: (408)-735-9200
ANAHEIM
 801 E. Ball Road, Anaheim, California 92805
 Telephone: (714)-776-6932/8730 TWX: 910-591-1189
WEST LOS ANGELES
 1510 Cotner Avenue, Los Angeles, California 90025
 Telephone: (213)-479-3791/4318 TWX: 910-342-6999
SAN DIEGO
 3444 Hancock Street
 San Diego, California 92110
 Telephone: (714)-298-0591, 0593 TWX: 910-335-1230
SAN FRANCISCO
 1400 Terra Bella
 Mountain View, California 94040
 Telephone: (415)-964-6200 TWX: 910-373-1266
PALO ALTO
 560 San Antonio Rd., Palo Alto, California 94306
 Telephone: (415)-969-6200 TWX: 910-373-1266
OAKLAND
 7850 Edgewater Drive
 Oakland, California 94621
 Telephone: (415)-635-5453/7830 TWX: 910-366-7238
ALBUQUERQUE
 6303 Indian School Road, N.E.
 Albuquerque, N.M. 87110
 Telephone: (505)-296-5411/5428 TWX: 910-989-0614
DENVER
 2305 South Colorado Blvd., Suite #5
 Denver, Colorado 80222
 Telephone: (303)-757-3332/758-1656/758-1659
 TWX: 910-931-2850
SEATTLE
 1521 130th N.E., Bellevue, Washington 98005
 Telephone: (206)-454-4058/455-5404 TWX: 910-443-2306
SALT LAKE CITY
 431 South 3rd East, Salt Lake City, Utah 84111
 Telephone: (801)-328-9838 TWX: 910-925-5834
PHOENIX
 4358 East Broadway Road
 Phoenix, Arizona 85040
 Telephone: (602) 268-3488 TWX: 910-950-4691
PORTLAND
 Suite 168
 5319 S.W. Canyon Court, Portland, Ore. 97221
 Telephone: (503) 297-3761/3765

NEW ORLEANS
 3100 Ridgelake Drive, Suite 108
 Metairie, Louisiana 70002
 Telephone: 504-837-0257

GERMANY
 Digital Equipment GmbH
MUNICH
 8 Muenchen 13, Wallensteinplatz 2
 Telephone: 0811-35031 Telex: 524-226
COLOGNE
 5 Koeln, Bismarckstrasse 7,
 Telephone: 0221-522181 Telex: 888-2269
 Telegram: Flip Chip Koein
FRANKFURT
 6078 Neu-Isenburg 2
 Am Forsthaus Gravenbruch 5-7
 Telephone: 06102-5526 Telex: 41-76-82
HANNOVER
 3 Hannover, Podbielskistrasse 102
 Telephone: 0511-69-70-95 Telex: 922-952

AUSTRIA
 Digital Equipment Corporation Ges.m.b.H
VIENNA
 Mariahilferstrasse 136, 1150 Vienna 15, Austria
 Telephone: 85 51 86

UNITED KINGDOM
 Digital Equipment Co., Ltd.
U.K. HEADQUARTERS
 Arkwright Road, Reading, Berks.
 Telephone: 0734-583555 Telex: 84327
READING
 The Evening Post Building, Tessa Road
 Reading, Berks.
BIRMINGHAM
 29/31, Birmingham Road, Sutton Coldfield, Warwicks.
 Telephone: (0044) 21-355 5501 Telex: 337 060
MANCHESTER
 13 Upper Precinct, Walkden, Manchester M28 5AZ
 Telephone: 061-790-8411 Telex: 668666
LONDON
 Bitton House, Uxbridge Road, Ealing, London W.5.
 Telephone: 01-579-2334 Telex: 22371
EDINBURGH
 Shiel House, Craigshill, Livingston,
 West Lothian, Scotland
 Telephone: 32705 / Telex: 727113

NETHERLANDS
THE HAGUE
 Digital Equipment N.V.
 Sir Winston Churchilllaan 370
 Rijswijk/The Hague, Netherlands
 Telephone: 070-995-160 Telex: 32533

BRUSSELS
 Digital Equipment N.V./S.A.
 108 Rue D'Arion
 1040 Brussels, Belgium
 Telephone: 02-139256 Telex: 25297

FRANCE
 Equipment Digital S.A.R.L.
PARIS
 327 Rue de Charenton, 75 Paris 12 8ME, France
 Telephone: 344-76-07 Telex: 21339
GRENOBLE
 10 rue Auguste Ravier, F-38 Grenoble, France
 Telephone: (76) 87 87 32 Telex: 32 882 F (Code 212)

NEW ZEALAND
 Digital Equipment Corporation Ltd.
AUCKLAND
 Hilton House, 430 Queen Street, Box 2471 A,
 Auckland, New Zealand
 Telephone: 75-533

SWEDEN
 Digital Equipment Aktiebolag
STOCKHOLM
 Vretenvagen 2, S-171 54 Sofna, Sweden
 Telephone: 98 13 90 Telex: 170 50
 Cable: Digital Stockholm

FINLAND
 Digital Equipment Corporation Ltd.
HELSINKI
 Rautatiekatu 11, P.O. Box 128
 Helsinki, Finland
 Telephone: 09-62443 Telex: 10340
 Cable: Digital Helsinki

CANADA
 Digital Equipment of Canada, Ltd.
CANADIAN HEADQUARTERS
 150 Rosamond Street, Carleton Place, Ontario
 Telephone: (613)-257-2615 TWX: 610-561-1651
OTTAWA
 120 Holland Street, Ottawa 3, Ontario K1Y 0X7
 Telephone: (613)-725-2193 TWX: 610-562-8907
TORONTO
 230 Lakeshore Road East, Port Credit, Ontario
 Telephone: (416)-274-1241 TWX: 610-492-4306
MONTREAL
 9675 Cote de Liesse Road
 Dorval, Quebec, Canada 760
 Telephone: 514-636-9393 TWX: 610-422-4124
EDMONTON
 5531 - 103 Street
 Edmonton, Alberta, Canada
 Telephone: (403)-434-9333 TWX: 610-831-2248
VANCOUVER
 Digital Equipment of Canada, Ltd.
 2210 West 12th Avenue
 Vancouver 9, British Columbia, Canada
 Telephone: (604)-736-5616 TWX: 610-929-2006

ARGENTINA
BUENOS AIRES
 Coasin S.A.
 Virrey del Pino 4071, Buenos Aires
 Telephone: 52-3185 Telex: 012-2284

VENEZUELA
CARACAS
 Coasin S.A. (Sales only)
 Apartado 50939
 Salana Grande No. 1, Caracas
 Telephone: 72-9637 Cable: INSTRUVEN

CHILE
SANTIAGO
 Coasin Chile Ltda. (sales only)
 Casilla 14588, Correo 15, Santiago
 Telephone: 396713 Cable: COACHIL

JAPAN
TOKYO
 Rikei Trading Co., Ltd. (sales only)
 Kozato-Kaikun Bldg.,
 No. 18-14, Nishishimbashi 1-chome
 Minato-Ku, Tokyo, Japan
 Telephone: 5915246 Telex: 781-4208
 Digital Equipment Corporation International
 Kowa Building No. 17, Second Floor
 2-7 Nishi-Azabu 1-Chome
 Minato-Ku, Tokyo, Japan
 Telephone: 404-5894/6 Telex: TK-6428

PHILIPPINES
 Stanford Computer Corporation
 P.O. Box 1608
 416 Dasmarinas St., Manila
 Telephone: 49-68-96 Telex: 742-0352

INDIA
 H.S. Sonawala Mg Director (Sales Only)
 HINDITRON SERVICES PUT LTD.
 69/A Nepean Sea Road
 Bombay, India

INTERNATIONAL (cont.)

NORWAY
 Digital Equipment
OSLO
 c/o Firma Service
 Waldemarstranegate 84-B-86
 Oslo 1, Norway
 Telephone: 37 19 85, 37 02 30 Telex: 166 43

DENMARK
 Digital Equipment Corporation
COPENHAGEN
 Vesterbrogade 140, 1620 Copenhagen V

SWITZERLAND
 Digital Equipment Corporation S.A.
GENEVA
 81 Route de l'Aire
 1211 Geneva 26, Switzerland
 Telephone: 42 79 50 Telex: 22 683
ZURICH
 Scheuchzerstrasse 21
 CH-8006 Zurich, Switzerland
 Telephone: 01/60 35 66 Telex: 56059

ITALY
 Digital Equipment S.p.A.
MILAN
 Corso Garibaldi 49, 20121 Milano, Italy
 Telephone: 872 748 694 394 Telex: 33615

SPAIN
MADRID
 Ataio Ingenieros S.A., Enrique Larreta 12, Madrid 16
 Telephone: 215 35 43 / Telex: 27249

BARCELONA
 Ataio Ingenieros S.A., Ganduxer 76, Barcelona 6
 Telephone: 221 44 66
 Digital Equipment Corporation Ltd.

AUSTRALIA
 Digital Equipment / a Pty. Ltd.
SYDNEY
 P.O. Box 491, Crows Nest
 N.S.W. Australia 3065
 Telephone: 439-2566 Telex: AA20740
 Cable: Digital, Sydney

MELBOURNE
 60 Park Street, South Melbourne, Victoria, 3205
 Telephone: 696-142 Telex: AA40616

PERTH
 643 Murray Street
 West Perth, Western Australia 6005
 Telephone: 214-993 Telex: AA92140

BRISBANE
 139 Merivale Street, South Brisbane
 Queensland, Australia 4101
 Telephone: 444-047 Telex: AA40616

ADELAIDE
 6 Montrose Avenue
 Norwood, South Australia 5067
 Telephone: 631-339 Telex: AA82625